



# Student Demographics



# Number of Students with Individualized Education Programs (IEPS):

6,313,342

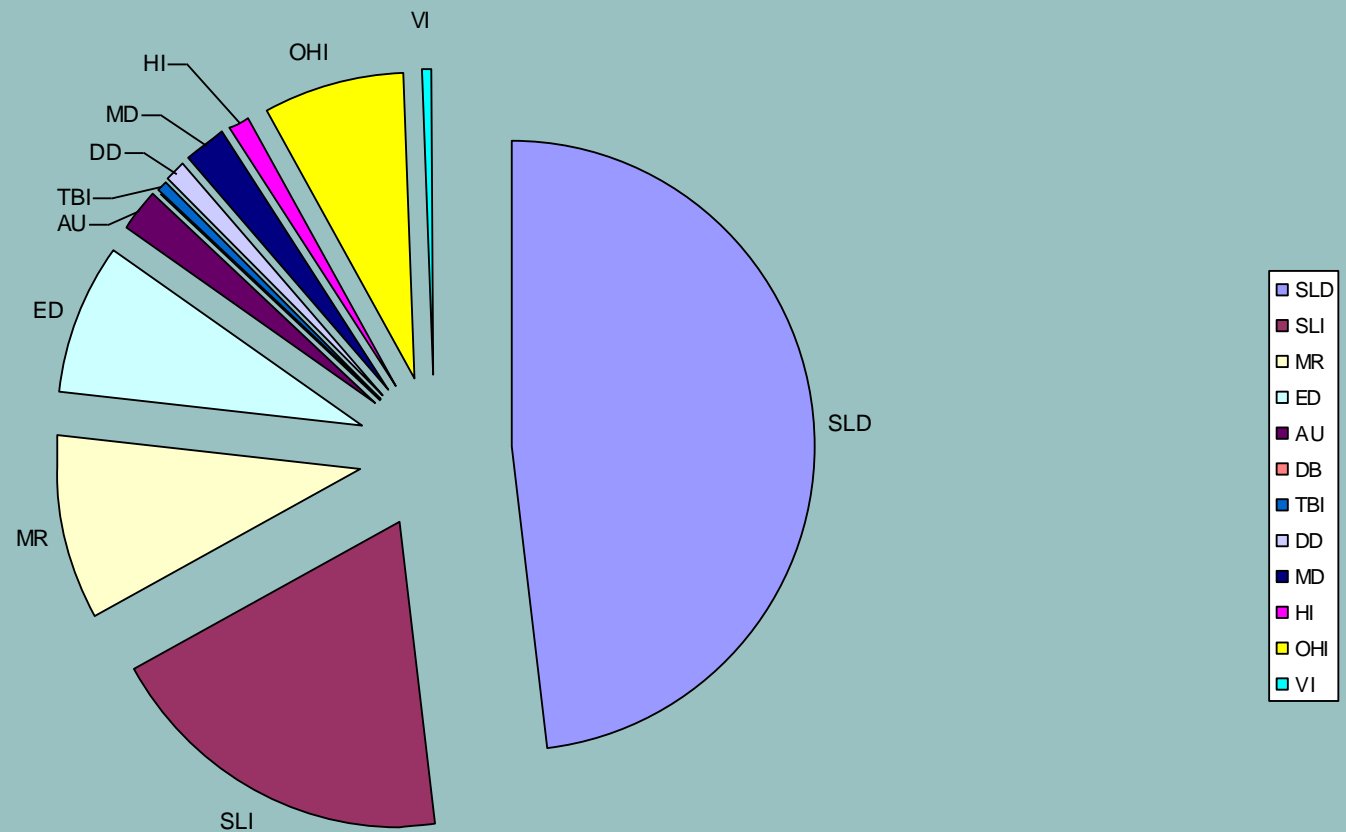
13.3% of total students\*

(\*ranges from high of 20% in New Mexico to low of 10% in Colorado)

Source: NCES, Common Core of Data

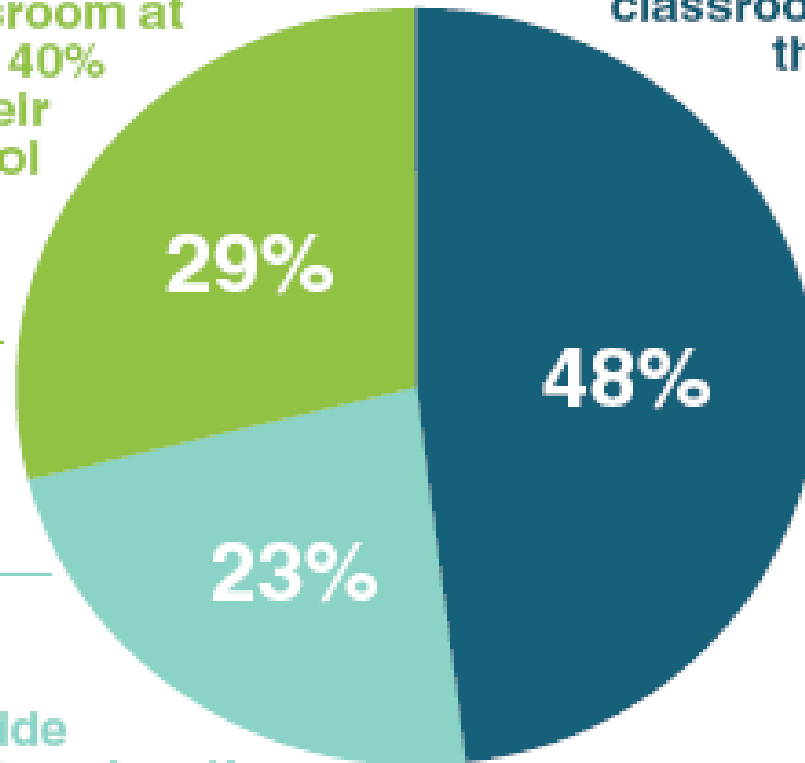


# IDEA Eligible Students



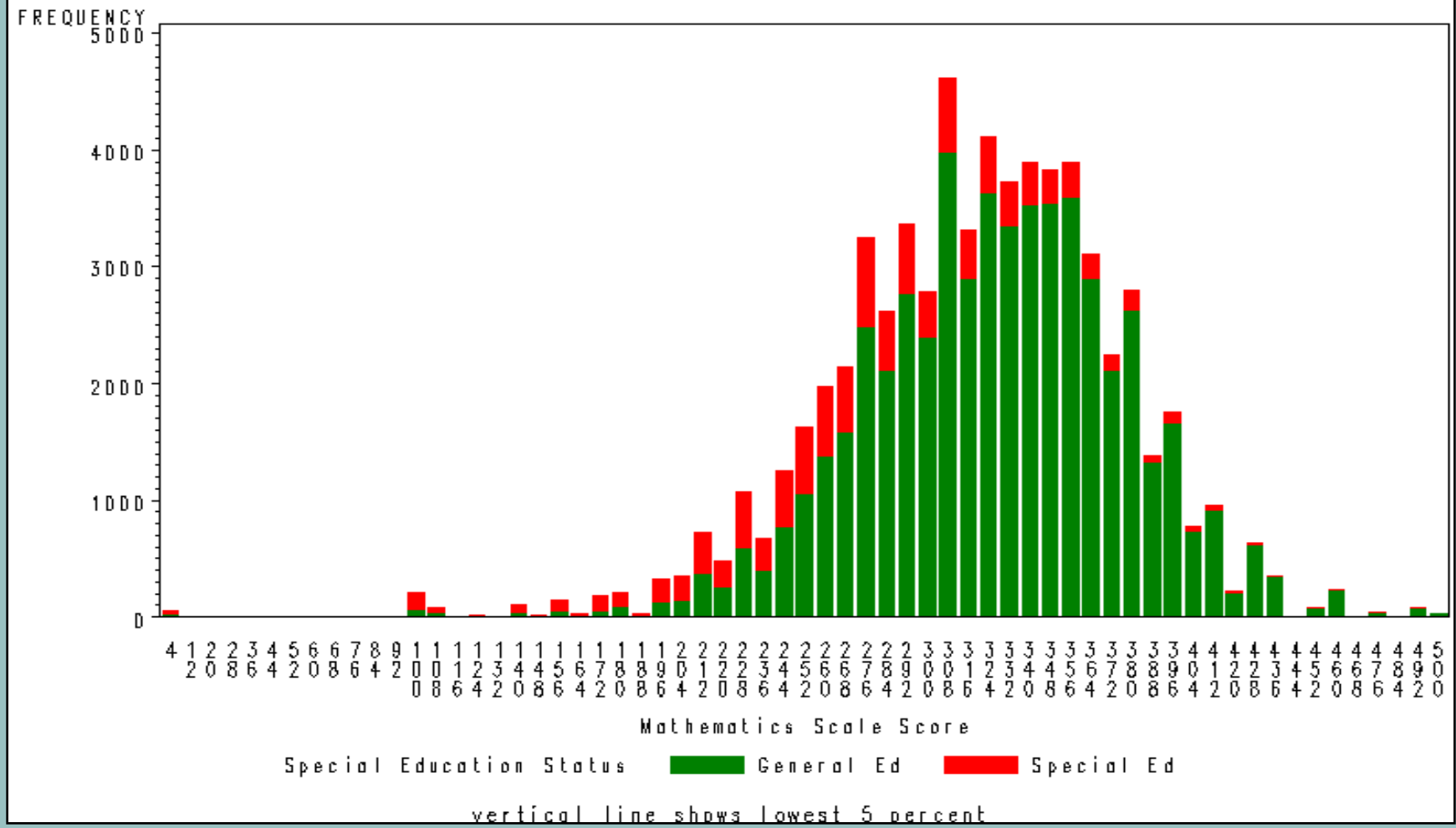
**In regular education  
classroom at  
least 40%  
of their  
school  
day**

**In regular education  
classroom more  
than 80%  
of their  
school  
day**



**Outside  
regular education  
classroom more than 60% of their school day**

# State 2: Grade 4 Mathematics Scale Scores by Special Education Status



From Marion, Gong, and Simpson, 2005